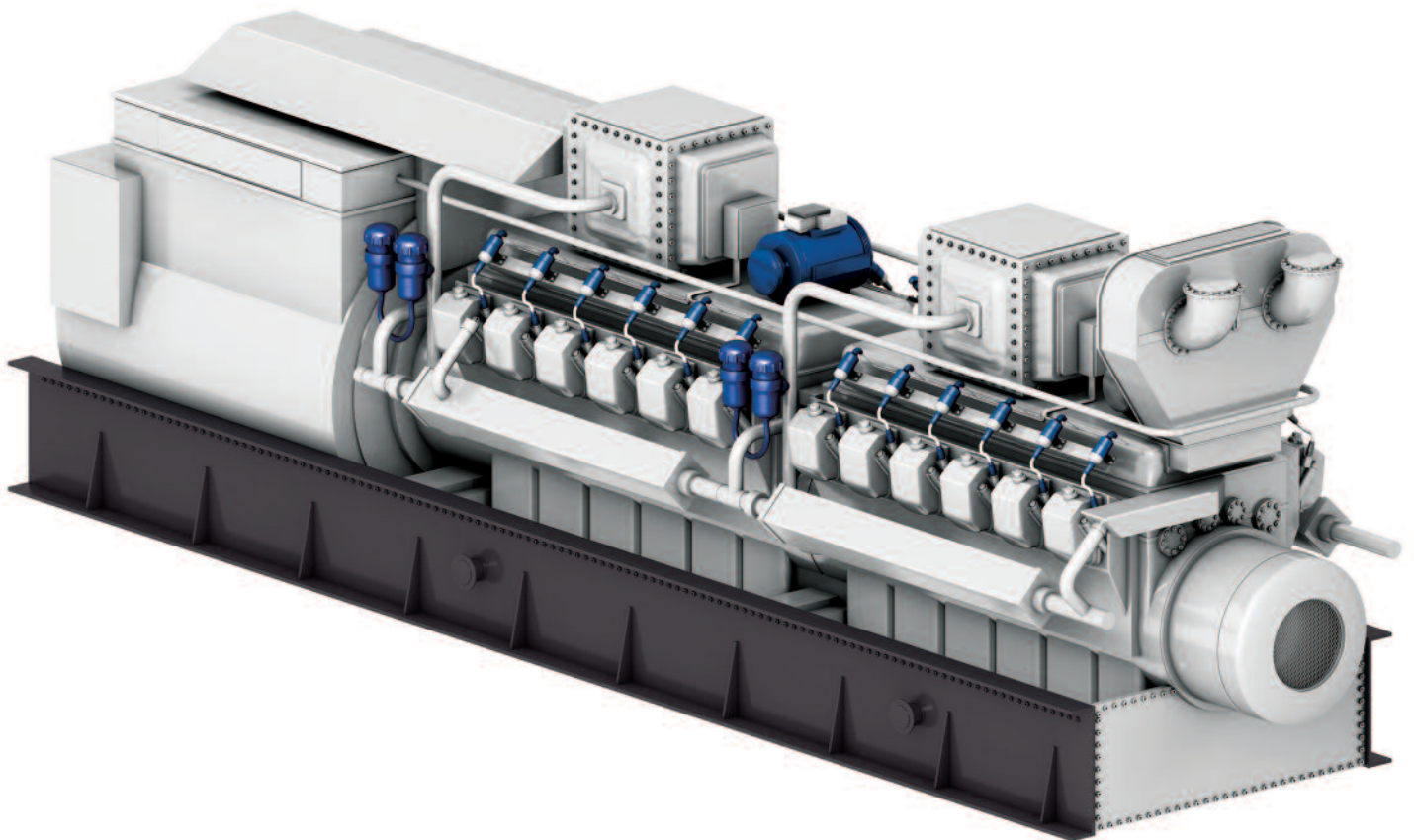


Q8 Oils

stationary gas engine oils

*high performance, high efficiency
lubricants for stationary gas engines*

power 
boosting performance



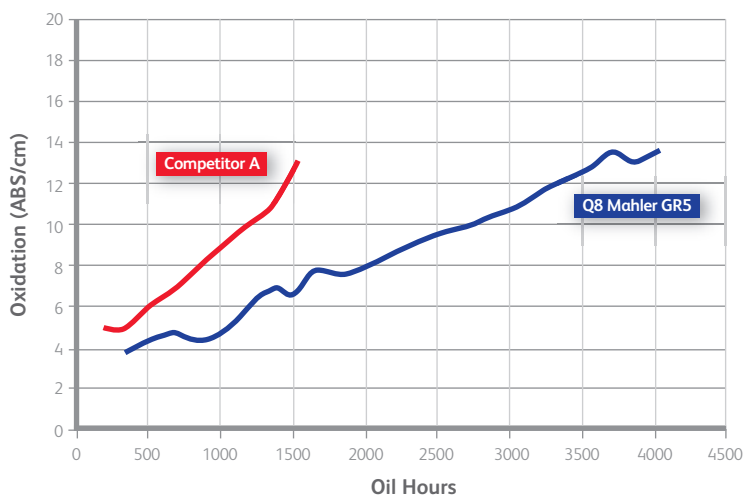
Q8 Mahler Productivity and Reliability



Oxidation Control

The thin oil film separating the liner from the piston is subjected to high temperatures and pressure, with oxygen and nitrogen present during the combustion cycle. It is therefore crucial that oils are formulated to resist oxidation and nitration.

The improved oxidation control of Q8 Mahler extends oil life and keeps the pistons clean. The unique combination of carefully selected additives and our base oils considerably reduces liner and piston lacquering. Moreover, ring groove deposits are prevented.



Oil oxidation test in gas engines

Any oil in use will age and be susceptible to oxidation; a process which results in the formation of weak acids which can increase the viscosity. The rate at which oil oxidizes differs per product and is affected by conditions in particular the temperature. The graph above illustrates how the latest generation Q8 Mahler outperforms other OEM approved products.

Panel Coker test:

- The Panel Coker test determines two critical aspects of the oil. These aspects are thermal stability and also the resistance of the oil to the formation of deposits that arise due to high temperature.
- In this test, oil is splashed against an aluminium test strip. The temperature of the oil is similar to the temperature in the combustion chamber of the engine.
- At the end of the test, the strip is assessed visually and the weight of the oil deposits measured.
- An oil with a good result in the Panel Coker test is indicative of its ability to resist oxidation and therefore keep the engine clean.



Competitor A



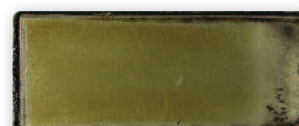
Competitor C



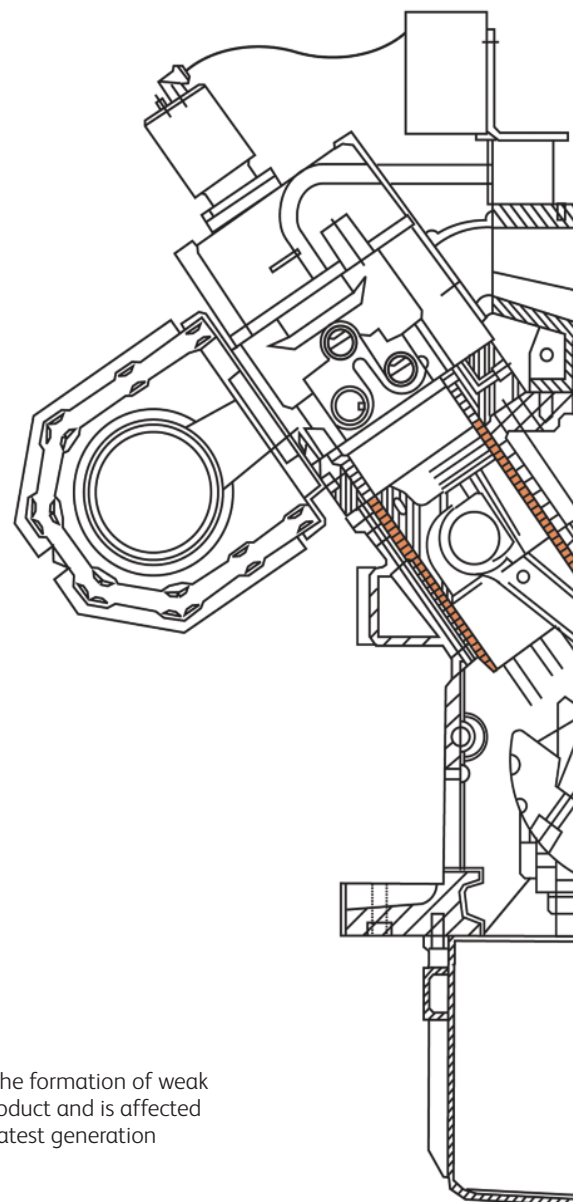
Competitor B



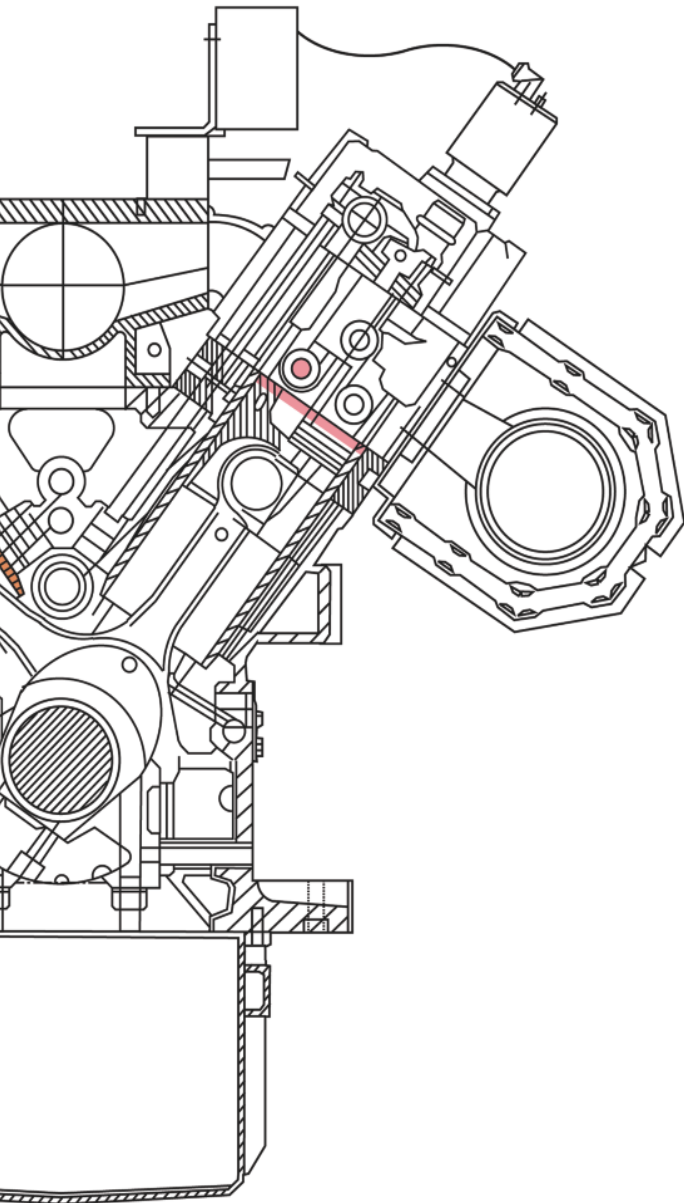
Q8 Mahler GR8



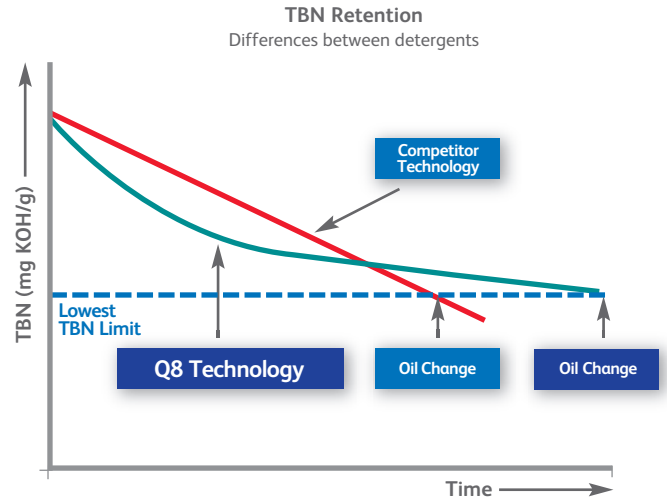
Q8 Mahler G5



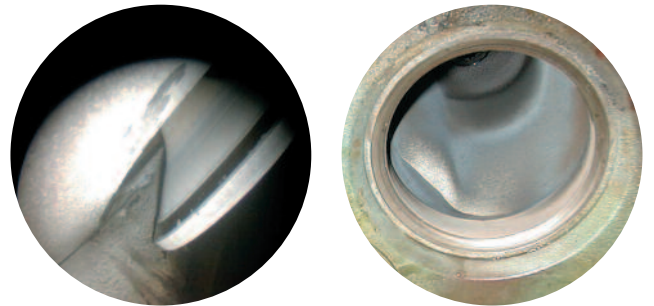
Reliability 24/7



TBN Retention Difference



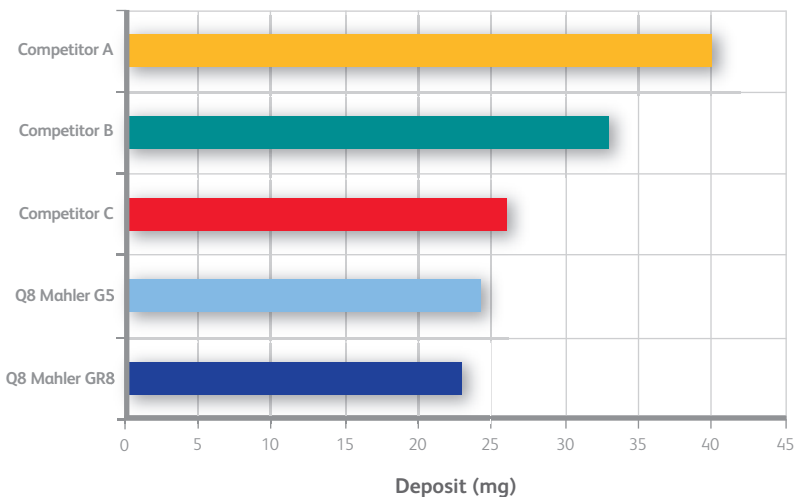
Compared to competitors, our technology gives Q8 Mahler a unique TBN retention curve that means the product has a longer service life.



Deposit Control

For the latest generation of Q8 Mahler products we have developed new additive technology which generates considerably less ash and therefore reduces deposits.

Endoscope inspections during field trials of Q8 Mahler clearly demonstrated a reduction in ash deposits.



Improved properties by fewer deposits

Metallic based additives are used to improve the performance of the oil, for example anti-wear properties and TBN. These additives are consumed in the combustion chamber resulting in ash. Although some ash is beneficial for lubrication preventing wear of the valve and the valve seat, too much ash deposition can be a hindrance to the ignition system thus reducing the efficiency of the engine. Q8Oils developed a test to measure how much harmful deposits oils form in the combustion chamber. The graph on the left illustrates the superior performance of the Q8 Mahler G series compared to other OEM approved products.

KRAS - Kuwait Routine Analysis Service

Regular analysis of the oil can determine change intervals and prevent engine damage. KRAS provides fast and reliable results via e-mail or Internet access, to customers own data. KRAS is designed to monitor engines running on all types of gas.

Every report includes a conclusion and recommendation of any action required. Many aspects are shown in the report, including some data in graphical format and minimum and maximum levels to provide a quick overview. All Q8Oils product engineers are qualified to give advice with your results.

Viscosity

Measuring viscosity can indicate conditions such as oil thickening (from oxidation or nitration) and increased contamination levels like combustion soot.

Total Base Number

Total Base number (TBN) is an indication of the oils neutralizing acids, important when the gas contains high levels of sulfur. When biogas or landfill gas is used, oils with higher TBN will provide longer protection against acids.

Total Acid Number

Total Acid number (TAN) is a measure of the acid level in the oil and an indicator of high oxidation, nitration and/or contamination. Often accompanied by an increase in oxidation, TAN analysis together with TBN is used to establish the optimum oil drain interval.

pH

pH is a measure of the acidity or base of a fluid.

Oxidation

Oxidation occurs when the oil molecules are exposed to oxygen over long periods, especially during high operating temperatures. Oxidation is a common problem and can cause premature thickening of the oil and formation of severe varnish and carbon deposits.

Nitration

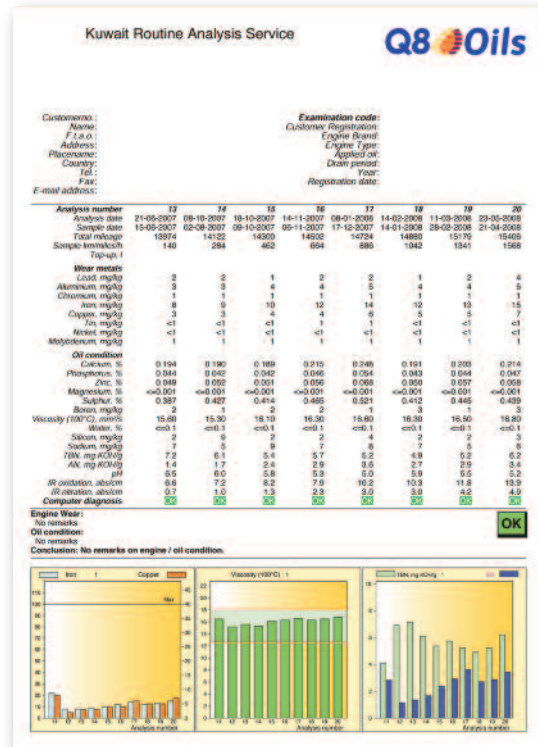
Nitration is a degradation of the oil by reaction with gaseous Nitrous Oxides (NOx) created during combustion and can indicate issues such as rust and corrosion.

Water

Water contamination can cause problems in the engines from as little as 100 ppm, such as foaming and the breakdown of the oil into emulsions and sludge that will block filters.

ICP

Inductive Coupled Plasma (ICP) can detect even the lowest metal concentration and wear particles in the oil sample. For example silicon, either from the fuel source or a damaged air inlet filter can be detected.



As well as KRAS, Q8Oils can offer other services:

Endoscopy:

Q8Oils technical engineers can conduct endoscope examinations of the engine, which can prevent additional downtime and the need to dismantle the engine, so avoiding significant costs.



What our customers think of Q8 Mahler...

“Our company highly recommends Q8 Mahler HA and Q8 Mahler MA. By using Q8 Mahler we have been able to reduce our operating costs by reducing oil consumption and extending drain intervals. Q8 Mahler has also made dramatic differences in our engine fleet e.g. preventing and even removing lacquer build up.

While we operate in the Bio-Gas market with aggressive fuel sources that can quickly and abruptly impact the oil, Q8 Mahler has proven to be affordable, stable, predictable and reliable where many others have not. The Q8Oils team continues to display a high degree of integrity, are customer oriented and have been interested in exploring options and alternatives that will benefit our business. In the three plus years of using Q8 Mahler, we have nothing but great things to say about the product, the company and its support of our business.”

Bill Deckard, Director of US Operations,

Power Generation and LFG Operations & Maintenance, Nashville, U.S.A.

“After 9000 operating hours the engine suffered from heavy detonation problems. More than six times a week the engine would be shut down and we had to consider costly clean-up of the combustion chambers. However Q8Oils suggested a change to Q8 Mahler R 40. Nothing else was done to the engine. This change instantly and completely eliminated the detonation problem. After 2000 hours on Q8 Mahler R 40 we have seen a 30% reduction in oil consumption and after tuning, the engine is now providing more than 1% point higher electrical efficiency.”

Laurids Jonassen, Plant Manager,

Ejstrupholm Varmeværk, Denmark.

“Energy Developments UK Ltd have been using a range of Q8Oils products on our engines (Deutz, Caterpillar, Jenbacher) for nearly seven years and can fully recommend Q8 Mahler. In the UK, Q8 Mahler MA has achieved a better than expected oil life accompanied with reduced combustion chamber deposits and minimal liner lacquering, resulting in extended liner and cylinder head life.

As with all engines running on landfill gas, all the mentioned benefits are of great importance for both the smooth running and reduction in operating costs. Equally important is the customer support and technical backup which Q8Oils provides. Energy Developments UK Ltd have worked closely with the technical team over the years which has resulted in benefits for both parties, especially with respect to the oil analysis techniques and the trialling of new products.”

Tim Orsborne, Maintenance Co-Coordinator,

Energy Developments Ltd, Middlesex, United Kingdom.

“We have been using Q8 Mahler for many years in maintaining co-generation plants in many different types of engines including Waukesha, MAN, Ford, Perkins and Guascor. We also find it very easy to convince new customers to use Q8 Mahler as it has proven to help reduce both oil consumption and operating costs. We also use the Q8Oils analysis to monitor the engine performance. As well as excellent products, I am also very satisfied with the service, dedication and expertise of the Q8Oils technical department.”

Arie Batenburg, Director,

Batenburg Technical Service, The Netherlands.

Q8 Mahler Gas Engine Oils

The products listed below are only intended as a guide. Engine operating conditions vary dramatically and we recommend that you talk with one of our application engineers to ensure your selection guarantees the best performance and maximum reliability. The formulation technology of Q8 Mahler MA and Q8 Mahler HA has been successfully proven in our customers engines over the last 20 years. The market demand for lubricants that meet the needs of the increasing number of high-efficiency engines has lead to the development of the new Q8 Mahler G range.

Natural and bio gases (low sulfur)

Q8 Mahler MA SAE 40

Q8 Mahler MA is suitable for a wide range of engines. It has well balanced performance characteristics and its TBN value is designed to control acid levels so that extended drain periods are possible.

Total Base Number D 2896 = 5.5 mg KOH/g Sulphated ash mass = 0,5 %

Q8 Mahler G5 SAE 40

Gas engine oil for application with natural gas as well as biogas and landfill gas. Q8 Mahler G5 was specifically developed with a low deposit tendency resulting in outstanding engine cleanliness. This product is especially suitable for modern high pressure gas engines, but is also for gas engines with a lower BMEP.

Total Base Number D 2896 = 6.0 mg KOH/g, Sulphated ash mass = 0.5 %

Q8 Mahler GR5 SAE 40

Synthetic gas engine oil for stationary gas engines. Q8 Mahler GR5 has outstanding oxidation stability and is capable of controlling liner cleanliness and oil consumption at increased liner and piston ring temperatures.

Total Base Number D 2896 = 6.0mg KOH/g Sulphated ash mass = 0,5 %

Q8 Mahler R SAE 40

Q8 Mahler R is manufactured with synthetic base oils for extreme operating conditions. Even at high temperatures it is very oxidation stable and will help extend drain intervals.

Total Base Number D 2896 = 7.0mg KOH/g Sulphated ash mass = 0,5 %

Bio-, landfill-, sewage & other highly polluted gases

Q8 Mahler HA SAE 40

Q8 Mahler HA is a variant of Q8 Mahler MA for engines running on aggressive gas. It has good TBN reserves to suppress the high levels of acid generated during the combustion process.

Total Base Number D 2896 = 7.9 mg KOH/g Sulphated ash mass = 0,9 %

Q8 Mahler G8 SAE 40

Q8 Mahler G8 is manufactured for high pressure engines running on aggressive gas. It has high TBN reserves to suppress the high levels of acid generated during the combustion process.

Total Base Number D 2896 = 8.0 mg KOH/g Sulphated ash mass = 0,8 %

Q8 Mahler G10 SAE 40

Q8 Mahler G10 is designed for gases that require a very high TBN reserve, enabling long drain periods.

Total Base Number D 2896 = 10 mg KOH/g Sulphated ash mass = 1,0 %

Q8 Mahler GR8 SAE 40

Synthetic gas engine oil for stationary gas engines. Q8 Mahler GR8 has outstanding oxidation stability and is capable of controlling liner cleanliness and oil consumption at increased liner and piston ring temperatures.

Total Base Number D 2896 = 8 mg KOH/g Sulphated ash mass = 0.8 %

Automotive Engines

The Q8 Mahler range includes products for automotive gas engines, including motors that have been converted to run on natural gas. For more information on Q8 Mahler C and Q8 Mahler T, please contact your Q8Oils product engineer.

Q8Oils develops, manufactures and markets main line automotive and industrial lubricants, satisfying the needs of customers in a broad range of market sectors.

- Q8Oils also specialises in the development of niche and customer specific lubricants, via our comprehensive research and development capabilities.
- After 20 years and millions successful operating hours, the Q8 Mahler range of gas engine oils has established itself as a market leader.
- Thousands of gas engines around the globe are running on Q8 Mahler and when combining its applications and approvals, it includes the worlds leading engine manufactures such as GE Jenbacher, GE Waukesha, Caterpillar Energy Solutions GmbH (Caterpillar, MWM), Ficanteri, GMT (VM), Perkins, Guascor, MAN, Deutz, Rolls Royce Bergen, Tedom and Wärsilä.
- Many of the engines in operation are monitored by our analytical tracking service, managed by our research and development laboratories. The monitoring gives us and our customers advanced information, with graphic interpretation, of the essential data e.g. iron, silica, total base number, viscosity, acidity index, etc. and this is used to give advice to our customers and help us to develop the next generation of gas engine oils.
- Our logistics service also satisfies the needs of our clients, thanks to the distribution of our products in trucks equipped with bulk delivery volume meters.

If you want to improve your engine reliability and productivity, contact us to find out what our high performance products can do for you. Many of our clients have experienced the benefits of working with Q8Oils.